

Roc Saint-Gervais

Causses Gorges - Hures-la-Parade



Roc de Saint-Gervais (Bruno Daversin)



Explore the Jonte gorge, the Roc de Saint-Gervais sanctuary and typical hamlets.

Useful information

Practice : Hiking on foot

Duration : 4 h

Length : 10.6 km

Trek ascent : 532 m

Difficulty : Medium

Type : Loop

Themes : Agriculture and livestock farming, History and culture

Trek

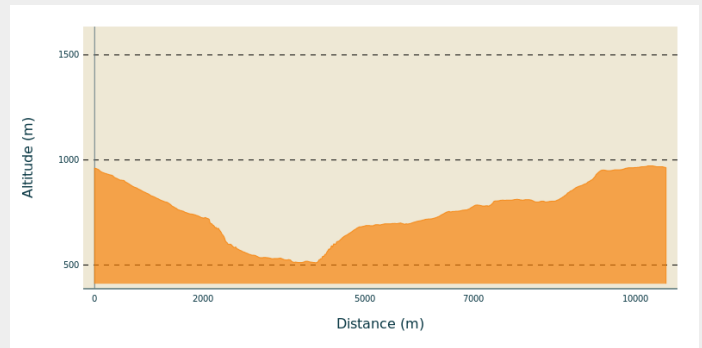
Departure : Hyelzas

Arrival : Hyelzas

Markings :  Yellow waymarks

Cities : 1. Hures-la-Parade
2. Saint-Pierre-des-Tripiers

Altimetric profile



Min elevation 511 m Max elevation 972 m

Start by crossing the parking area at Hyelzas.

- 1) Before the houses, take the track on the left; at the crossroads turn left again going downhill. Before the barrier, the path veers left and joins an old mule track, which continues downhill to the D 996.
- 2) Turn right onto the D 996, towards Le Rozier, to the hamlet of Les Douzes.
- 3) Just before the restaurant, take the stairs uphill between the houses to the sanctuary dedicated to St Gervase.
- 4) After visiting the sanctuary (retrace your steps), take the path on the left onto a flat area. Continue straight ahead on the path that goes up the ravine of Les Bastides, then cross the ravine and go uphill to the D 63 road.
- 5) Turn right onto the road for 500 m to the gate, and take the track on the left. Go past the gate. At the first crossroads, take a path on the right that goes uphill to the hamlet of Les Bastides.
- 6) In the hamlet, take the road on the right downhill to the D 63. Cross the D 63 to take the path opposite, which goes downhill for a few metres, then uphill to a track leading to Hyelzas.
- 7) Go past the front of the Causseard farm, then turn right, then left, then right again to return to the parking area.

On your path...



▲ The sanctuary of Roc de Saint-Gervais (A)
Le Fédou (C)

▲ Hyelzas (B)

All useful information



Is in the midst of the park

The national park is an unrestricted natural area but subjected to regulations which must be known by all visitors.

Advices

Make sure your equipment is appropriate for the day's weather conditions. Remember that the weather changes quickly in the mountains. Take enough water, wear sturdy shoes and put on a hat. Please close all gates and barriers behind you.

How to come ?

Transports

Bus stop: les Douzes

- Bus line 215 « Millau - Peyreleau - Meyrueis »

<https://lio.laregion.fr/>

Access

From Meyrueis on the D 996, first towards the Causse Méjean plateau, then towards L'Aven Armand Hyelzas.

Advised parking

Parking area downstream of Les Douzes (on an abandoned section of the road)

Information desks

Tourism'house and national Parc at Florac

Place de l'ancienne gare, N106, 48400 Florac-trois-rivières

info@cevennes-parcnational.fr

Tel : 04 66 45 01 14

<https://www.cevennes-gorges-du-tarn.com>



Source



CC Gorges Causses Cévennes

<https://www.gorgescaussescevennes.fr/>



Parc national des Cévennes

<http://www.cevennes-parcnational.fr/>

On your path...



⚠ The sanctuary of Roc de Saint-Gervais (A)

According to Philippe Chambon, “this minuscule chapel is dedicated to Saints Gervase and Protase. It is in the Romanesque style but has been remodelled many times. The apse seems to date from the beginning of the Romanesque period (11th century). The stepped nave, which follows the slope of the bedrock, is less ancient. This sanctuary was originally a mediaeval stronghold, surrounded by a chapel, a cemetery and a few houses, some vestiges of which can still be seen between the rocks. Since the foundation of the hamlet of Les Douzes, its dead have been buried in the cemetery adjoining the chapel. They are carried to their final resting place by their family and friends. On the first Sunday in July, a pilgrimage takes place here, with farmers coming for a blessing for their herds and harvests”.

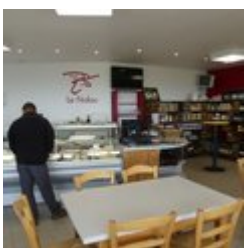
Attribution : nathalie.thomas



⚠ Hyelzas (B)

In the hamlet of Hyelzas, a typical Causse plateau farm has been recreated down to the last detail. It consists of several buildings made from the local material: limestone. Visitors will learn how the traditional life of inhabitants of the Causse Méjean was organised in the 19th century. Their activities followed the rhythm of the seasons.

Attribution : nathalie.thomas



Le Fédou (C)

Since 1990, Le Fédou dairy has produced a wide range of cheeses from Causse sheep’s milk. This is a good example of local initiatives that allow farmers to live and prosper. The dairy proposes a guided activity, “Of Sheep and Men”, which includes a visit of the traditional farm and the modern farm, and ends with a Le Fédou cheese tasting.

Attribution : nathalie.thomas